

ORAZE ELEMENTARY



Weekly Calendar

"Building Champions for Life"

3468 N. Armstrong Ave. Fresno CA 93727

Phone (559) 327-1700 FAX: (559) 327-1790 Attendance: (559) 327-1788

Sara McAvoy, Principal Jaclyn Russell, GIS Senior

WEEK of January 22nd, 2024

Bearcat Champions R.O.A.R.

RESPECTFUL ON TASK ACHIEVEMENT RESPONSIBLE

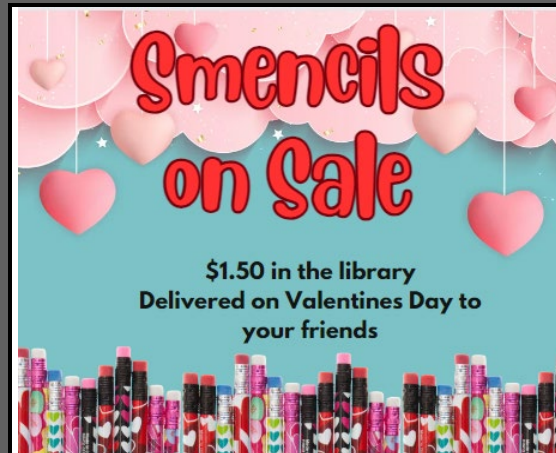
Monday 1/22	Tuesday 1/23	Wednesday 1/24	Thursday 1/25	Friday 1/26
SMENCILS On SALE	SMENCILS On SALE	SMENCILS On SALE	SMENCILS On SALE	SMENCILS On SALE
Folklorico- 3:00	Cheer Dress Rehearsal- 2:45 Art Gala- 3:15	Oral Interp.- 7:00 am GATE- 7:00 am Student Council- 12:15 EARLY RELEASE Multicultural Club- 1:30 Hmong Dance Group 1- 1:30- 2:45 CE Area Spirit Night	Human Relations Day Hmong Dance Group 2- 3-4:15 History Day 3-4 Science Team 3-4 Spring Athletic Parent Meeting- 5:30 MPR	

LUNCH SCHEDULE: 1st & 2nd 11:10- 12:00

3rd & 4th 11:40-12:30

5th and 6th 12:10- 1:00

Breakfast Pizza OR French Toast Sticks	Orange Chicken Rice Bowl OR Cheesy Pull Apart Bread	Chicken Patty Sandwich OR Bean and Cheese Burrito	Pasta with Meat Sauce OR Deep Dish Cheese Pizza	HOT Chicken Nuggets OR Mac n Cheese
--	---	---	---	---



Follow us:



Oraze Elementary



oraze.elementary



oraze.cusd.com

Important Dates

1/27.....	Clovis Pep Classic
1/29.....	Spring Athletics Begin
1/29.....	LCAP Parent Advisory Night
1/30.....	CE Articulation Concert
1/30.....	CE Community Boundary Meeting
1/31.....	Elementary Art Reception
2/2.....	Winter Athletic Awards
2/3.....	Clovis West Pep and Cheer Showcase
2/6.....	CE Community Boundary Meeting
2/7.....	Oral Interpretation Festival
2/8.....	PAC Meeting
2/9.....	Academic Awards
2/9.....	Father Daughter Dance
2/10.....	Clovis North Pep and Cheer Showdown
2/11.....	NO SCHOOL

Positivity Project: Social Intelligence

This week our school community will be focusing on the character strength of **Social Intelligence**. Social intelligence means you are aware of other people's thoughts and feelings. You understand why they do things. Social intelligence refers to a person's ability to understand and manage interpersonal relationships. It is distinct from a person's IQ or "book smarts." It includes an individual's ability to understand, and act on, the feelings, thoughts, and behaviors of other people. This type of intelligence can take place "in the moment" of face-to-face conversations but also appears during times of deliberate thinking. It involves emotional intelligence and self-awareness. Social intelligence helps individuals build relationships -- and is important to numerous aspects of a person's life. It allows an individual to form friendships and alliances. And it assists a person against being taken advantage of. People with social intelligence can "read" other people's faces and know what motivates them. Social intelligence builds over time and as a person ages. In this sense, it is similar to the character strength of perspective.